

# Zebrfish Models for Human Acute Organophosphorus Poisoning

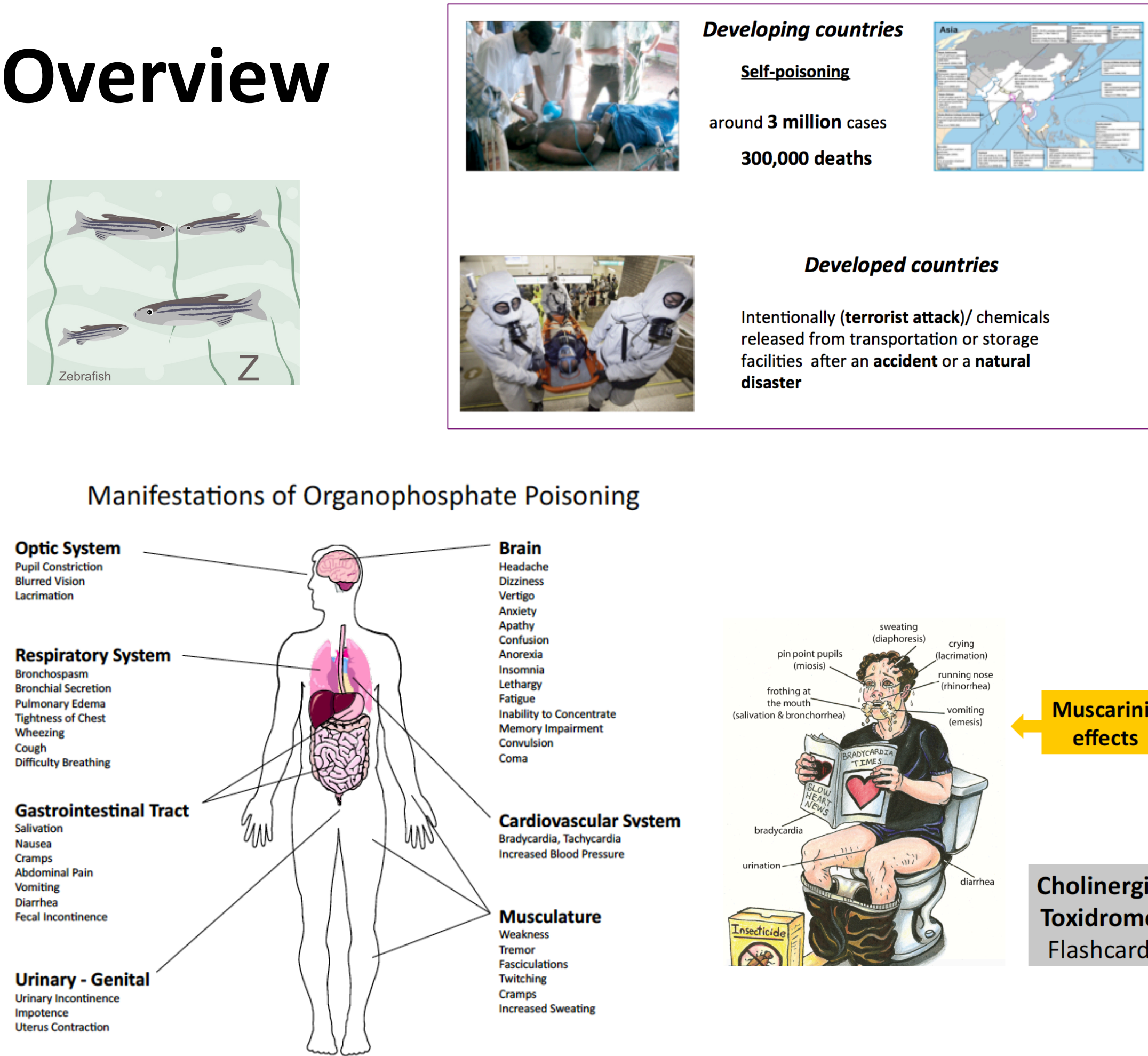
Natàlia G. Reyero<sup>1,2</sup>, Melissa Faria<sup>3,4</sup>, Francesc Padrós<sup>5</sup>, Patrick J. Babin<sup>6</sup>, David Sebastián<sup>7</sup>, Jérôme Cachot<sup>6</sup>, Eva Prats<sup>4</sup>, Mark Arick II<sup>2</sup>, Eduardo Rial<sup>8</sup>, Anja Knoll-Gellida<sup>6</sup>, Guilaine Mathieu<sup>6</sup>,  
Florane Le Bihanic<sup>6</sup>, B. Lynn Escalon<sup>1</sup>, Antonio Zorzano<sup>7</sup>, Amadeu M.V.M Soares<sup>7</sup>, Demetrio Raldúa<sup>4</sup>

<sup>1</sup>Environmental Laboratory, US Army ERDC, Vicksburg, MS, USA; <sup>2</sup>IGBB, Mississippi State University, Starkville, Mississippi, USA; <sup>3</sup>CESAM, University of Aveiro, Portugal; <sup>4</sup>CSIC, Barcelona, Spain; <sup>5</sup>Universitat Autònoma de Barcelona, Bellaterra, Spain; <sup>6</sup>Université de Bordeaux, Talence, France; <sup>7</sup>Institute for Research in Biomedicine, Barcelona, Spain; <sup>8</sup>CIB-CSIC, Madrid, Spain

## Introduction

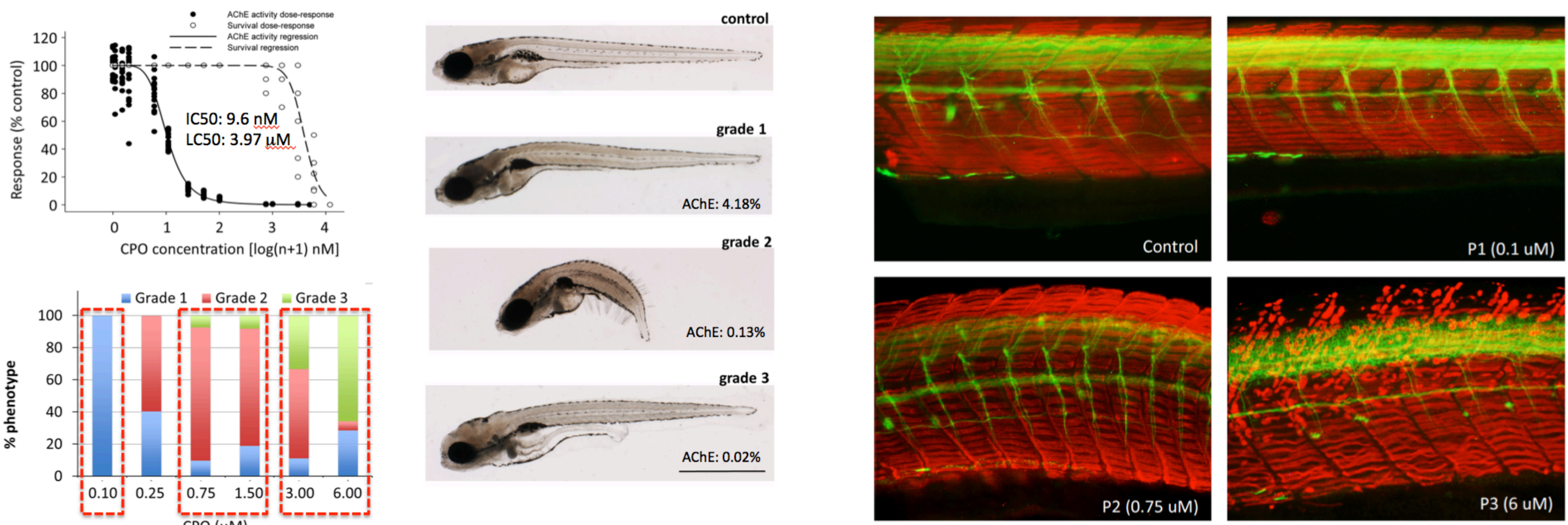
Organophosphorus compounds (OP) are currently the most commonly used pesticides in the world and its use might result in acute poisoning, with around 3 million cases and 300,000 deaths annually. The molecular initiating event leading to organophosphorus compounds poisoning is the inhibition of acetylcholinesterase (AChE), resulting in the accumulation of the neurotransmitter acetylcholine (ACh) in the cholinergic synapses. However, the pathways conducting to some of the adverse outcomes are not well-understood. Zebrafish is being increasingly used as a model species for both ecological and human health risk assessment. Although the modes of action (MoA) leading to toxicity for these types of pesticides have already been analyzed in zebrafish, these analyses have been performed during embryonic development and therefore, are more related with the developmental toxicity than with the OP poisoning. In this study we use a prototypic OP compound, chlorpyrifos-oxon (CPO), to develop a zebrafish model of OP poisoning using a set of molecular markers. The acute effects of mild, moderate, and high CPO concentrations on zebrafish larvae have been studied at different levels of organization including molecular (transcriptomic analysis by RNAseq, biochemical responses), cellular, tissue and organismal (gross morphology, behavioral effects [visual motor response (VMR) and touch-evoked escape response]). Three phenotypes were identified by gross-morphology and behavioral analysis. In conclusion, the adverse outcome pathways of the different phenotypes have been dissected empirically and the results obtained show that exposed zebrafish mimic many aspects of the human OPP, therefore confirming the use of zebrafish larvae as a suitable model to identify new antidotes against cholinergic syndrome.

## Overview



## Results

### Grading OPP severity in zebrafish larvae

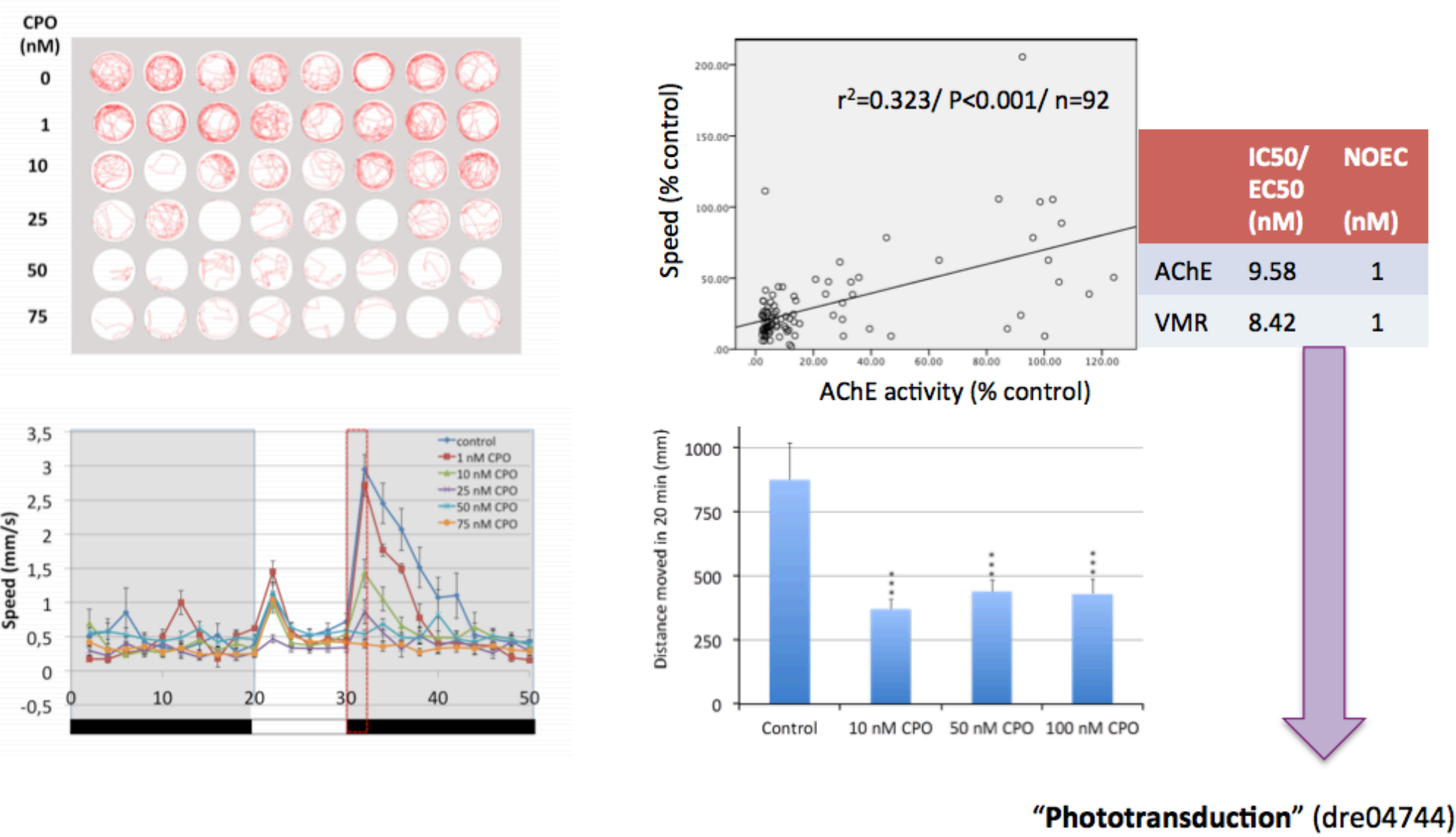


### Mild OPP zebrafish model

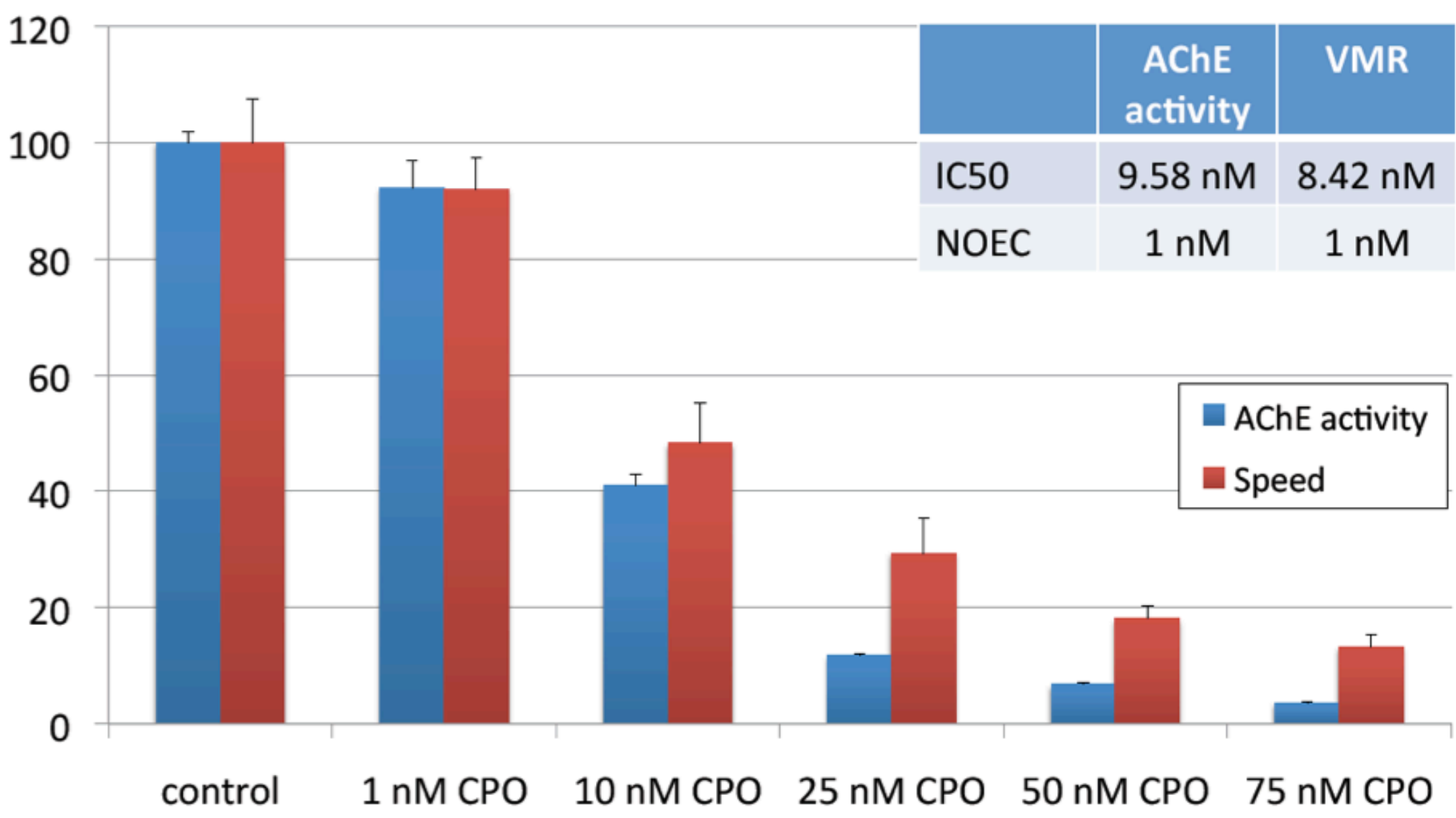
- ✓ No morphological defects at CPO concentrations below 100 nM
- ✓ Mild but significant decrease in the length of the trunk
- ✓ Histopathological assessment: any effect at CNS/PNS, retina, axial muscle fibers
- ✓ No oxidative stress
- ✓ Large-scale transcriptomic analysis (RNAseq): 80 DEGs (FDR adjusted p<0.05)

4 down-regulated KEGG pathways

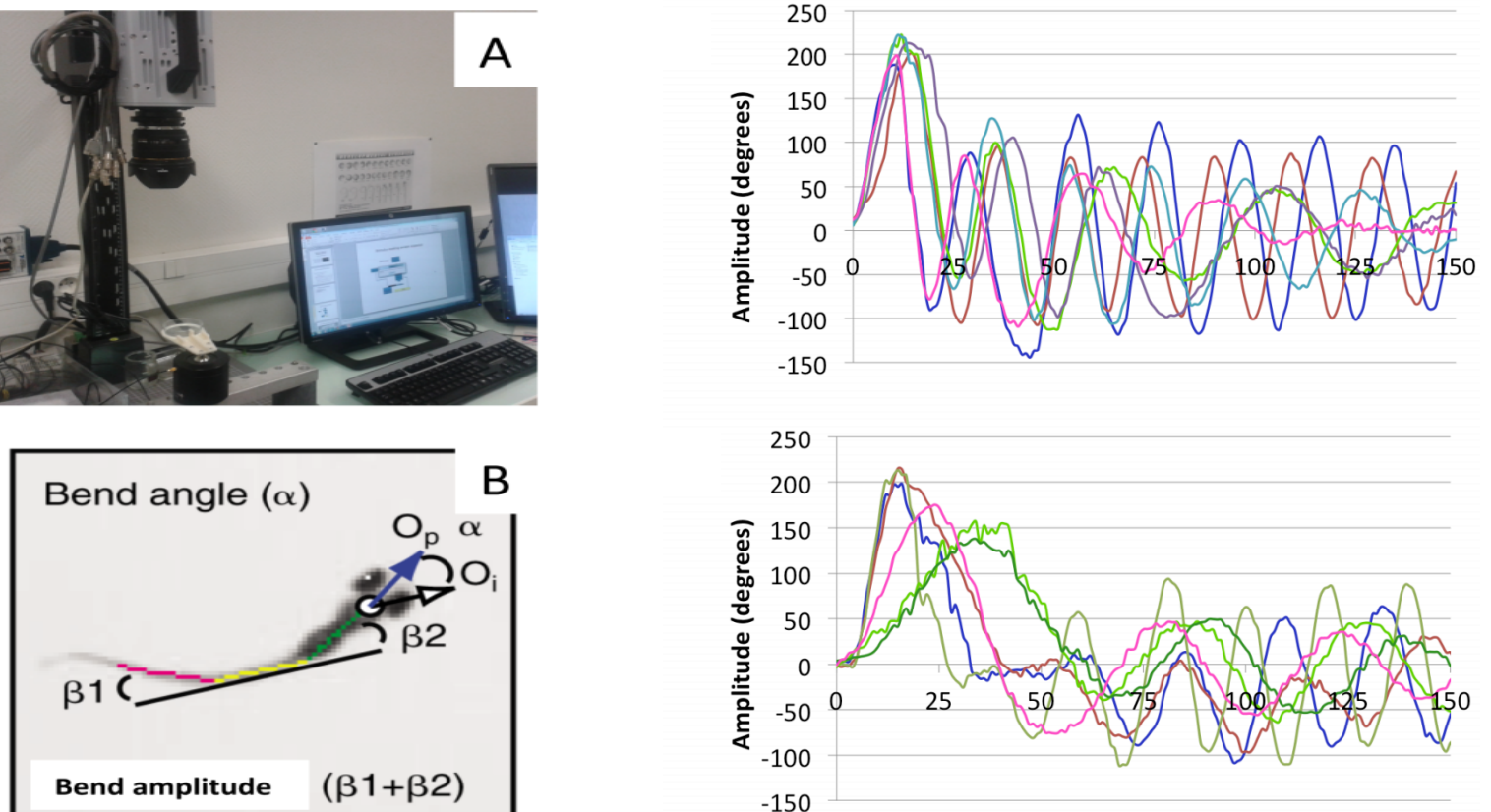
### Visual Motor Response is strongly impaired in the mild OPP model



### VMR parallels AChE inhibition in larvae exposed to low concentrations of CPO



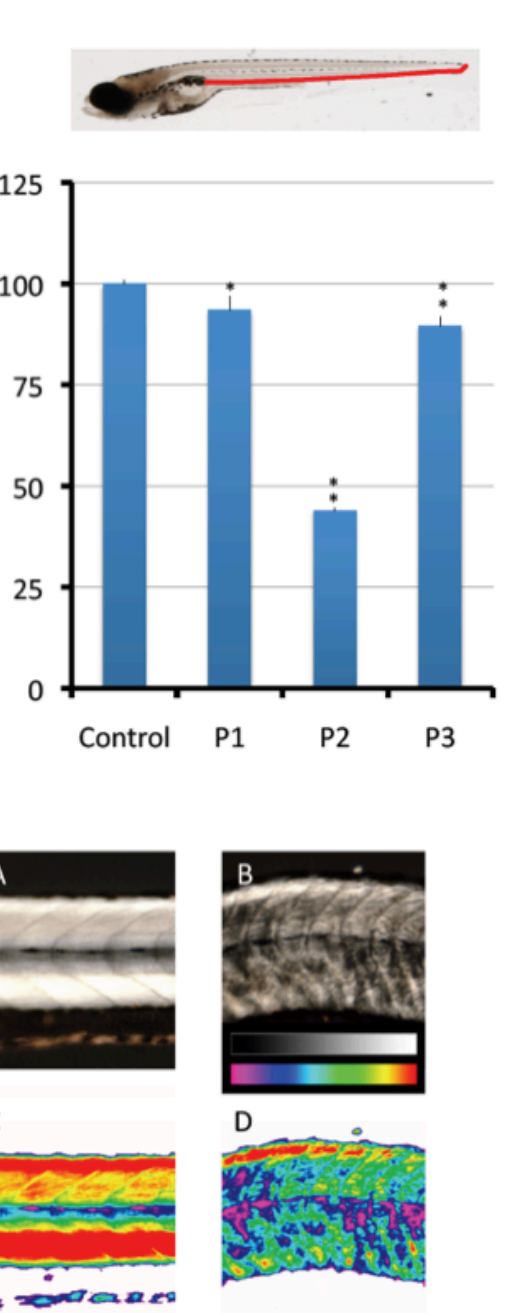
Although kinematic of the touch-evoked escape response is altered, mild OPP model is responsive to the touch stimulus



### Moderate OPP zebrafish model

✓ Severe decrease in the length of the trunk (around 50%)

#### Trunk length reduction



No oxidative stress

Transcriptomic analysis (RNAseq): 4,568 DEGs (FDR adjusted p<0.05)

30 down-regulated KEGG pathways

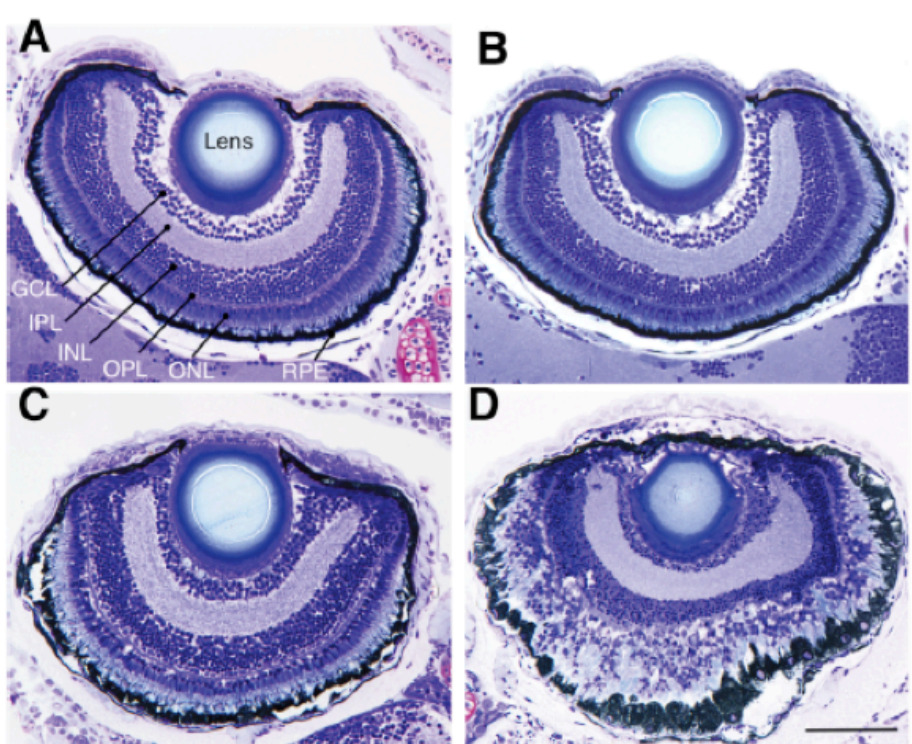
"Phototransduction" (dre04744)

41 up-regulated KEGG pathways

**Immune and inflammatory response**  
Proteasome (dre03050), toll-like receptor signalling pathway (dre04620), MAPK signalling pathway (dre04010), RIG-I like receptor (dre04622)

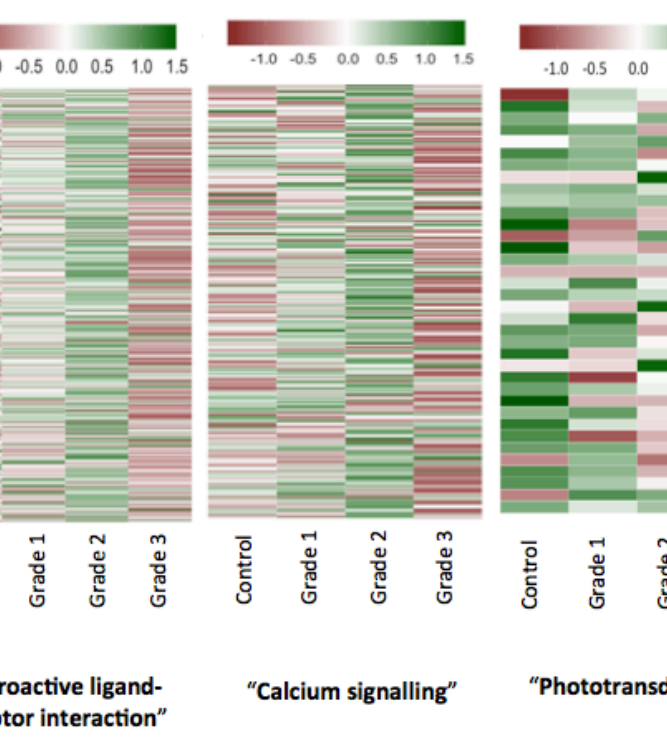
### Severe OPP zebrafish model

- ✓ Mild, but significant, decrease in the length of the trunk
- ✓ Histopathological assessment: Altered axial muscle fibers, CNS, PNS, retina



Transcriptomic analysis (RNAseq): 4,996 DEGs (FDR adjusted p<0.05)

9 down-regulated KEGG pathways



34 up-regulated KEGG pathways

**Immune and inflammatory response**

Proteasome (dre03050)  
Salmonella infection (dre05132)  
Cytokine-cytokine receptor interaction (dre04060)  
Toll-like receptor signalling pathway (dre04620)  
NOD-like receptor signalling pathway (dre04621)  
RIG-I like receptor (dre04622)  
MAPK signalling pathway (dre04010)

## Acknowledgments

Funding: US Army ERDC-IRO (W912HZ-13-BAA-01)/ Environmental Quality Research Program/ NATO SFP project MD.SFP 984777/ National Science Foundation EPSCOR Grant EPS-0903787/ Portuguese Foundation for Science and Technology (SFRH/BPD/78342/2011)/ Advanced Grant ERC-2012-AdG-320737 / Spanish Government (CTM2014-51985-R)

Natalia.g.vinas@erdc.dren.mil